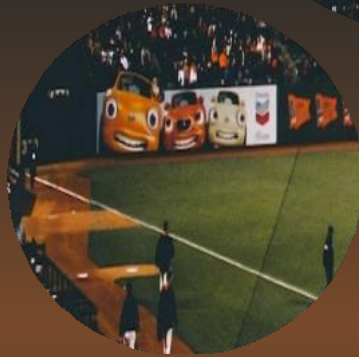


# BASEBALL



Manuel and Shadi

# INTRODUCTION



Baseball is a team sport, in which two teams made up of **9 players** compete for 9 innings in each of which the two teams alternate in the **attack** and **defense** phases



# THE GAME



- A baseball game is played by two teams of nine players. There are no time limits, the game is in fact structured from nine to eleven rounds called innings, at the end of which, in the case of a tied score, the "extra innings" continue indefinitely until one of the two teams ends an inning ahead.
- The roles are divided based on whether the players are in the defense phase or in the attack phase.
- The positioning of the players in defense is designed to cover as much of the pitch as possible, in order to make it more likely that the opponents will be eliminated.(Pitcher, Catcher)
- The same players who play during the defense phase go to bat when their team is on offense. The attacking team takes turns, following a batting order, sending its players to the batter's box



# THE POINTS

- To increase their team's score, the offensive players must hit the ball thrown by the pitcher and score runs.
- If the batted ball lands between foul lines, the batter must run to first base; if the play allows it, he can also try to reach the subsequent bases, but with the obligation to touch them in order during the run.
- The batter who arrives "safely" on a base is from that moment defined as a runner, he is awarded a valid hit (hit) and one of his teammates (the next in the batting order) will go into the batter's box.
- One more hit will advance the runner to the next bases until he reaches home plate and thus scores a run.